



www.mceneaney.com

4315 50th Street, NW
Washington, DC 20016
202-552-5600
fax 202-552-5605

Woodley Park
2912 Garfield Terrace, NW
Washington, DC 20008
Offered at \$2,225,000

Alyssa Crilley
Cell: 301.325.0079
Office: 202.552.5615
Fax: 202.552.5665
alyssa@alyssacrilly.com
www.alyssacrilly.com

Specializing in the marketing of fine residential properties.

2912 Garfield Terrace - Washington, DC 20008

Woodley Park is situated between Rock Creek Parkway to the south and east, the Klinge Valley Bridge to the north and the National Cathedral close to the west. More than a dozen historic sites distinguish the community, and part of the area has been designated an historic district. Presidents Hoover, Johnson, and Eisenhower; Supreme Court Justices Warren, Black, Clark, Jackson and Vinson; congressmen, businessmen, military leaders, government workers and journalists have lived here. In the 1990's more than 6,000 inhabitants called Woodley Park their community.

Today 2912 Garfield Terrace, NW scores 82 out of 100 on walkscore.com! A short .35 mile to the Woodley Park Zoo Metro Station, and less than half a mile to grocery stores, restaurants, coffee shops, movie theaters, schools, parks, libraries, bookstores, fitness and drug stores.

Main Level:

Classic center hall double entry foyer with dramatic skylight

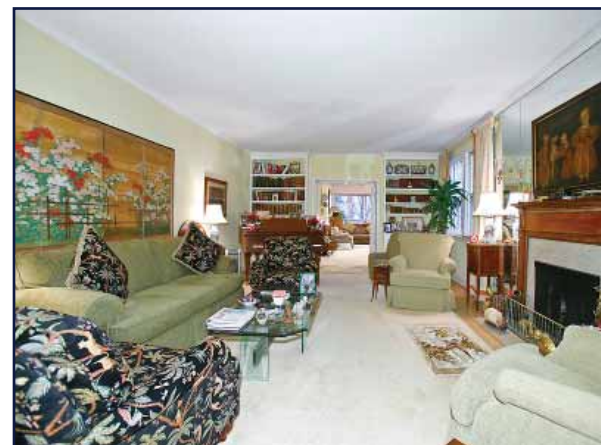
Foyer with open access to Dining Room, Lower Level, Living Room and Bedrooms

Large Dining Room connecting to Butler's Pantry

Sunny Living Room with wood-burning fireplace and built-in shelving

Family Room with separate Breakfast Area overlooking Patio

Renovated Kitchen featuring five burner cook top, double wall oven, dishwasher, GE Monogram refrigerator, Wood Mode cabinets opens to Family Room and two Car Garage



2912 Garfield Terrace - Washington, DC 20008



Butler's Pantry

Powder Room

Laundry Room

Walk-up access to large Upper Level Storage Room

Sitting Room/Office with Half Bath

Hallway coat and linen closets

Master Bedroom with Balcony, Skylight, 13' ceiling, two large walk-in closets and vanity

Elevator

Master Bath with separate whirlpool bathtub and handicap accessible shower, double sinks, and separate vanity

Bedroom #2 with Full Bath

Lower Level:

Large Recreation Room with built-ins, fireplace and walkout access to pool deck

Private Au Pair Suite with Kitchenette and large living space, separate Bedroom #5, Full Bath, Utility Room, Storage Room and walk-out access to front of house

Bedroom #4 with double closets and Full Bath

Elevator and Elevator Equipment Room

Bedroom #3 with Kitchenette, large closets, Full Bath with shower and walk-out access to Pool Deck

Exterior:

Two car attached Garage with automatic door opener

Fenced yard

Greenhouse connecting to Garage

Shed

Upper and Lower Patios

Pool with Deck



2912 Garfield Terrace, NW Washington, DC 20008

Offering at: \$2,225,000
Lot Size: 24,283 Square Feet
Lot Description: Lot 72 Block 2113
Year Built: 1956
Water & Sewer: Public
Heat: Forced Air, Natural Gas
CAC (Type): Electric
Hot Water: Natural Gas
Fireplace: Two Wood Burning
Parking: Two Car Garage
Estimated Taxes (2010): \$18,651
Elementary: Oyster-Adams
Middle School: Deal
High School: Woodrow Wilson
Total Bedrooms: Five
Total Full Baths: Five
Total Half Baths: Two



**LUXURY
PORTFOLIO**
FINE PROPERTY COLLECTION

LEADING
REAL ESTATE
COMPANIES™
of THE WORLD



ALYSSA CRILLEY

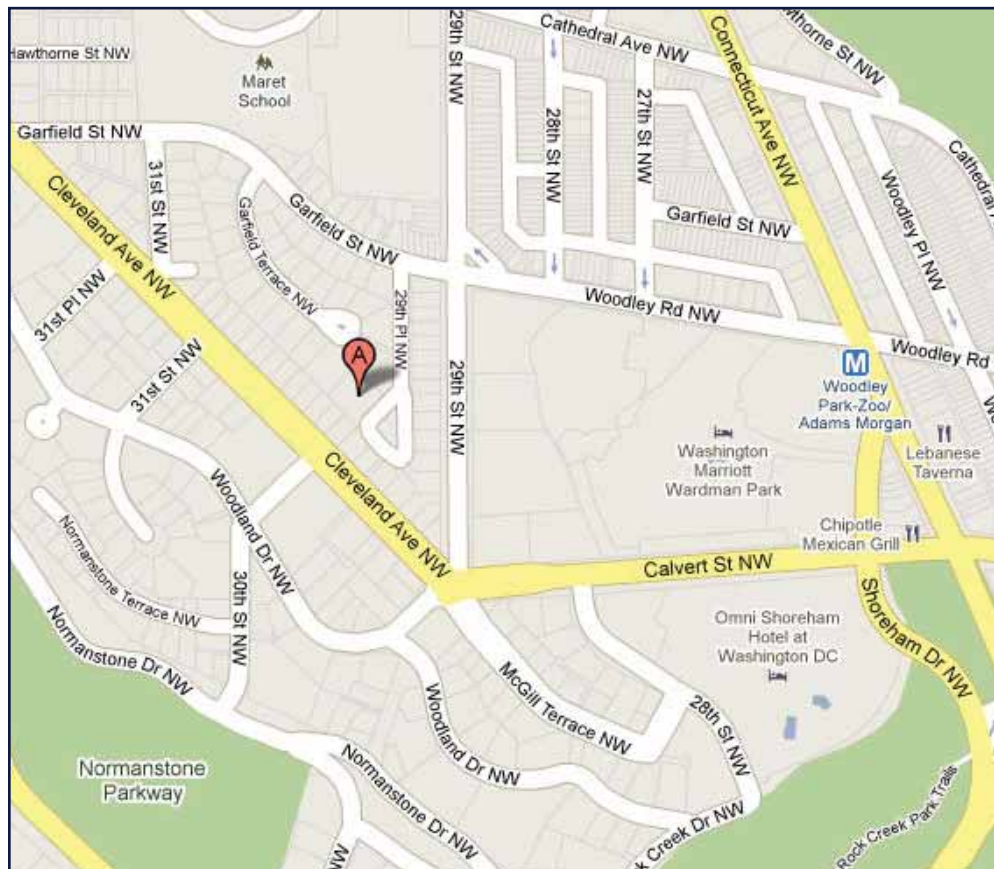
301.325.0079

alyssa@alyssacrilly.com

www.alyssacrilly.com



www.mceneaney.com



All information is deemed accurate, but as it is provided by third parties, it is not guaranteed.